



HIGHLIGHTS

LOOK FOR US ONLINE AT WWW.BIGHORNREA.COM



Photo submitted by:
Kristen Brown

ANNUAL ELECTION VOTING 2026 >>>

By now you should've received your ballot in the mail. Please be sure to use the postage paid return envelope that was included with your ballot to return it. This envelope ensures your ballot will be mailed to an independent auditor for the vote tally. Any ballots returned directly to Big Horn REA **WILL NOT** be counted. Ballots must be received no later than Thursday, June 18th, 2026 at 1:00pm, in order to be counted and to receive a \$25.00 credit on your next electric bill. The \$25.00 credit is one per membership – not one on each electric account you have with Big Horn REA.

Thank you for your participation in the election of directors for YOUR cooperative – we need your vote!

INSIDE

- Easement Notification Statute
- Attention irrigators
- Energy tip of the month
- Scam tip of the month
- Update your contact information
- Peak Demand

June

-
- 1- Bills Sent Out
 - 18- Ballots Due
 - 22- Auto Pay Day
 - 25- June Bill Due

July

- 1- Bills Sent Out
- 2- Closed (4th of July)
- 18- Ballots Due
- 21- Auto Pay Day
- 27- July Bill Due

EASEMENT NOTIFICATION STATE STATUTE

NOTICE: TO ALL MEMBERS AND CUSTOMERS OF BIG HORN RURAL ELECTRIC COMPANY (“BHREC”) HAVING AN BHREC ELECTRICITY DISTRIBUTION OR TRANSMISSION DELIVERY SYSTEM, OR PORTION OF SYSTEM, VISIBLY ON THEIR PROPERTY, WHICH WAS INSTALLED ON OR BEFORE JANUARY 1, 2006, AND FOR WHICH THERE IS NO VALID EXISTING WRITTEN EASEMENT IN FAVOR OF BHREC.

Pursuant to Wyoming Statute 34-1-159, effective July 1, 2026, BHREC will possess a statutorily established easement for its electricity distribution and transmission system that was installed on your property on or before January 1, 2006. This easement shall give BHREC the following rights:

- (1) The right to reconstruct, re-phase, maintain and repair the existing system and the right to trim and remove trees and other vegetation hazardous or reasonably likely to become hazardous to the delivery system;
- (2) Access to the easement and ingress and egress shall be limited to the extent necessary to permit the reasonable enjoyment of the rights and privileges granted by this statute unless access or ingress and egress to parts of the easement would be hazardous to or materially encumbered for the electric utility, in which case the easement may include other reasonable access that minimizes impacts on the Landowner to the extent reasonably possible.
- (3) The width of an easement granted under this statute shall be consistent with the historical and traditional use by the electric utility of the delivery system but shall not exceed thirty (30) feet in any direction from the location of the existing line or other physical components of the system.
- (4) BHREC may not expand its use of the easement beyond adjustments consistent with historic uses in a way that would materially increase the burden on the landowner’s property, except when needed to serve a reasonable expansion of use for neighboring or local land uses. Such exception shall not include industrial and manufacturing related increases in wattage.

The full text of Wyoming Statute 34-1-159 is available at BHREC’s website <https://bighornrea.com/>

ENERGY EFFICIENCY: <<< TIP OF THE MONTH

During these warm summer months, a smart thermostat can help keep your home comfortable while reducing cooling costs. Smart thermostats learn your routine and automatically raise the temperature when you’re away and cool things down before you return, avoiding unnecessary energy use. You can also adjust settings remotely from your phone, so you’re never cooling an empty house. Setting your thermostat a few degrees higher while you’re away or asleep can lead to significant savings. Many smart thermostats provide reports and tips, helping you fine-tune your energy use and stay cool while keeping your electric bill in check.



ATTENTION IRRIGATORS

By now you have received your horsepower charges for irrigation. If you have changed your horsepower or you think it is wrong, please contact us at the office at 307-568-2419.



SCHOLARSHIPS

Education is not the filling of a pail, but the lighting of a fire.

~William Butler Yates

Congratulations to the Class of 2026!

We awarded scholarships this year to the following students:

- Lucian Hoffman
- Kruze Forshee
- Eliza Whittock
- Bree Jackson
- Evelyn McNulty
- Clayton Yoder
- Payton Tillett
- Jacob Moody
- Elana Schilthuis
- Hailee Winterholler
- Dalley Bassett
- Paxton Philpott
- Tannar Lowry
- Abbri Wagner
- Zayden Stahl
- Makayla Workman
- Chute Cauffman



On behalf of the board at Big Horn REA we would like to take this opportunity to congratulate all these students on their stupendous achievements.

We hope that the way ahead is even brighter with this scholarship being the foundation of their future success.

We are always grateful to our Scholarship Committee:

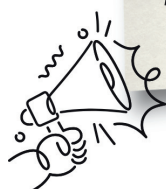
Gretchen Gasvoda, Melissa Harrington and Shalene Cheatham who volunteer their time to invest in our youth.



Important

REMINDER

Please keep us up to date with your contact information! There are times when we need to contact members about service problems, billing questions or safety issues, its much easier if we have a cell phone number and email on file.



Make sure to keep us up to date with all your contact information!



SCAM TIP OF THE MONTH

Protect your accounts by enabling multi-factor authentication (MFA) wherever possible. MFA adds an extra layer of security by requiring a second step—like a code sent to your phone or an authentication app—beyond just your password. Even if a scammer steals your login information through phishing or data breaches, MFA can stop them from accessing your account. Choose app-based authentication over text messages when available, as it's more secure. Taking a few minutes to turn on MFA for email, banking and additional online accounts can significantly reduce your risk of identity theft and financial loss.

Source: staysafeonline.org

For years, Big Horn REA has billed with a two-part rate structure, including the base facility charge and energy (kWh) charges. We will be moving to a three-part rate structure to better align Big Horn's cost recovery and give members more control over their monthly bill. We will continue to educate you, our members, throughout the rest of the year to help you understand how demand charge works.

WHAT CHANGED?

Better technology allows us to introduce a three-part rate structure that improves rate equity among members and breaks up the current energy charge into **energy (kWh)** and **peak demand (kW) charges**.

Energy

- **Energy (kWh)** refers to the total amount of power used in a month and is measured in kilowatt-hours.

DEMAND

- **Peak Demand (kW)** refers to the highest hourly usage during the month and is measured in kilowatts.

WHAT IS PEAK DEMAND?

When electricity is at its highest demand, we call that a **PEAK**. Peak demand puts stress on the grid, requiring more generation, transmission, and distribution infrastructure. The peak demand charge will fairly charge all members for their contribution to the peak.



WANTED

We would love to hear from our members!



Got a scenic photo of a place on our grid or a recipe created by you?

Please email us at jazmin@bighornrea.com to have your photo or recipe added to our monthly newsletter!



If your submission is chosen to be published in our newsletter you will receive a \$25 bill credit!

>>> BOARD OF DIRECTORS

John Joyce, President
Manderson: 568-2514
ijnjoyce56@gmail.com

Willie Bridges, Vice President
Cowley: 548-2545
willieb@pryormtneng.com

John Fernandez, Secretary
Meeteetse: 272-1553
john.fernandez8614@gmail.com

Sara Schlattmann, Treasurer
Otto: 921-2024
hortonwyo@gmail.com

Mike Miller, Director
Greybull: 272-8241
michael.miller2522@gmail.com

FOR OUTAGE OR TROUBLE

Call the office number: ANYTIME
(307) 568-2419 of 1-800-564-2419

After 5:30 p.m., weekend and holidays all calls will be answered by our professional answering service, who will contact the appropriate person(s).



Big Horn Rural
Electric Company

A Touchstone Energy® Cooperative 

PO Box 270, Basin, WY 82410
(307) 568-2419
FAX (307) 568-2402
1-800-564-2419

bhrec@bighornrea.com
www.bighornrea.com

Staff and Crew
Dotti Brown
Rusty Burden
Stacy Cortez
Michael Flores
Clint Getzfreid
Todd Herman
Carrie Hunt

Jazmin Irvine
Wade Koehn
Anthony Nelson
Bill Phillips
Tristen Snyder
Greg Tharp
Justin Workman

Manager: Jeff Pillow
(307) 272-0748
pillow@bighornrea.com

Office Hours
Monday - Thursday
7:00am-5:30pm

Make sure to check out our QR Code to reach our website quicker, and follow us on Facebook for any outage updates!



 [BigHornRuralElectric](https://www.facebook.com/BigHornRuralElectric)