



Big Horn Rural Electric Company

HIGHLIGHTS

LOOK FOR US ONLINE AT WWW.BIGHORNREA.COM



BIG HORN HIRES NEW GENERAL MANAGER >>>

BIG HORN REA WILL BE CLOSED SEPTEMBER 2ND FOR

★ **LABOR** ★
★★★★ **DAY** ★★★★★

In the coming months Big Horn will have a new face in the General Manager office but not a new name. Jeff Umphlett is retiring, and Jeff Pillow has accepted the position of General Manager taking place August 5, 2024. Jeff Pillow comes to Big Horn from Oregon Trail Electric Cooperative (OTEC) but was previously employed by Powder River Energy in Wyoming. He is currently the Line Superintendent at OTEC and noted in his interview that he has always worked towards being a manager in his career that began attending Northwest Lineman College in California. Pillow said "You just feel freedom when you cross into Wyoming from other states. I like that feeling, I can't describe it, except the feeling of freedom."

Jeff Umphlett has been working for Big Horn since 1999 and before that worked for Riverton Valley Electric Association which is now better known as High Plains Power in Riverton.

CONTINUED PAGE 2

INSIDE

- New general manager
- Lovell substation
- For sale by sealed bid
- Big Trails project

If you have a photo that you would like to submit for the newsletter, please email it to us at jazmin@bighornrea.com

BIG HORN HIRES NEW GENERAL MANAGER

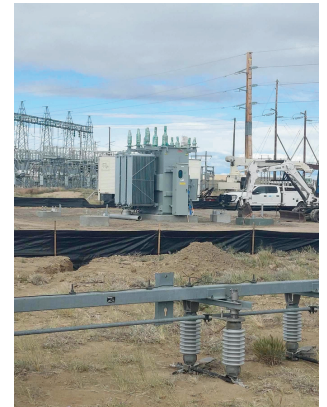


During Umphlett's career at Big Horn, he has seen many changes in a short amount of time. Some of those notable changes are several pivots in all areas of the service territory; single phase to three phase conversions for bigger homes and businesses; renewable energy changes such as roof top solar; and advances in equipment and safety that make things easier for crews.

Umphlett will spend his retirement days fishing with his brother, enjoying cabin time with his family and a project or two at the house. Big Horn is a better, safer and sought-after place to work because of Umphlett's management throughout the years and he will be sorely missed by staff and board alike.

LOVELL SUBSTATION

Pictured are photos taken at the new Lovell Substation addition. This addition will house a 5 Mega Volt-Amp (MVA) transformer which will provide capacity growth for the Lovell area. The contractor completing this project is Besler Inc out of South Dakota. The project won't be complete until 2025 due to long lead times on equipment.



»»» ATTENTION BILL PAY PAYERS!

We have been getting quite a few calls from members who use Bill Pay. The misconception comes when members think that the day they make the payment/the payment comes out of their account we receive the payment. Unfortunately, we don't receive it that same day. The bank you use for bill pay then prints a check and mails it to us. The day we receive these checks is the day that we process the payment and post it to your account.

If you have any questions, please contact your bank.

FOR SALE BY SEALED BID

Big Horn Rural Electric Company is accepting bids on the following items. These items may be inspected at Big Horn REA's Basin shop on September 4th and 5th from 8:00 am to 12:00 pm. Anyone interested in viewing an item should call the office at (307) 568-2419 or (800) 564-2419 to make an appointment. **ITEMS MAY ONLY BE VIEWED BY APPOINTMENT.** Items to be sold are As Is/Where Is.

All bids are subject to the terms and conditions of the Sale of Surplus Equipment. Bids must be received in the Basin office, PO Box 270, 415 South Street, Basin, WY 82410, in a sealed envelope clearly marked "SURPLUS EQUIPMENT SEALED BID." Bids must be received no later than 1:00 pm on September 20th. Big Horn REA reserves the right to accept or reject any bid.



#1 2008 GMC Duramax with Flatbed. Motor is bad. Doesn't run. 126,270 miles.



#2 2014 Dodge 5500 with a VST 40I Bucket Truck. Had new motor installed by DPS in Worland @ 139,460 miles. Bucket works as should. 151,220 miles.



#3 2020 Dodge bumper only.



#4 3 Ford bumpers, front is a 2025, back two are 2022. some hardware, no tow hooks.



#5 2017 Dodge 3500 with cab chassis. Has all the wiring for flatbed or new box (not included). 111,789 miles.



#6 New take off. 2025 Ford dually box complete with bumper, lights and receiver hitch. Rear camera was taken off.



#7 New take off. 2022 Ford long box complete with bumper, lights, and receiver hitch. Rear camera was taken off.

BIG TRAILS

Pictured below are photos taken from the Big Trails project in Ten Sleep. The project consists of approximately 7 miles of existing overhead single-phase line to overhead and underground three phase line. The contractor is Front Range Powerline out of Glenrock. The project should be completed in the fourth quarter of 2024.



>>> BOARD OF DIRECTORS

John Joyce, President
Manderson: 568-2514
jnjoyce56@gmail.com

Willie Bridges, Vice President
Cowley: 548-2545
willieb@pryormtneng.com

Steve Helburn, Secretary
Greybull: 765-2900
stevehelburn@gmail.com

Sara Schlattmann, Treasurer
Otto: 921-2024
hortonwyo@gmail.com

John Fernandez, Director
Meeteetse: 272-1553
john.fernandez8614@gmail.com

FOR OUTAGE OR TROUBLE

Call the office number: ANYTIME
(307) 568-2419 of 1-800-564-2419

After 5 p.m., weekend and holidays all calls will be answered by our professional answering service, who will contact the appropriate person(s)



PO Box 270, Basin, WY 82410
(307) 568-2419
FAX (307) 568-2402
1-800-564-2419

bhrec@bighornrea.com
www.bighornrea.com

Staff and Crew

Dotti Brown
Rusty Burden
Clint Getzfreid
Todd Herman
Jazmin Jara
Wade Koehn

Heather Lawrence
Anthony Nelson
Bill Phillips
Tristen Snyder
Greg Tharp
Randy Theasmeyer

Manager: Jeff Pillow
(541) 786-4906
pillow@bighornrea.com

Make sure to check out our QR Code to reach our website quicker, and follow us on Facebook for any outage updates!

 [BigHornRuralElectric](https://www.facebook.com/BigHornRuralElectric)

