

# HIGHLIGHTS

VOL. 42, ISSUE 4

Look for us online @ [www.bighornrea.com](http://www.bighornrea.com)

MAY 2021



# ANNUAL MEETING 2021

## VOTING 2021

**A**t Big Horn REA, your voice matters. For more than 80 years we have been owned and governed by members like you. Your vote in our annual Board of Directors election is your voice in your cooperative, a chance to weigh in on leaders who will represent you and your interests.

As the pandemic continues to evolve, Big Horn REA made the decision to forego the 2021 Annual Meeting. However, we will be holding a director election using mail-in ballots again this year. There is one board candidate for District # 5 (Lovell, Deaver, Frannie) that was nominated by the Nominating Committee on March 23, 2021.

The Bylaws of Big Horn Rural

Electric Company provide for the election of directors by members through the use of mailed ballots. You will receive your ballot and 2020 Annual Report in the mail in a specially marked envelope. No member may submit more than one ballot. Please indicate your vote by placing an (X) in the square next to the candidate of your choice and sign your name where indicated.

**Please be sure to use the envelope that was included with your ballot to return it** This envelope ensures your ballot will be mailed to an independent auditor for vote tally. Any ballots returned directly to Big Horn REA **WILL NOT** be counted. Ballots must be received no later than



1:00 pm June 18th, 2021 in order to be counted and to receive a \$25.00 credit on your next electric bill. The \$25.00 credit is one per membership – not one on each electric account you have with Big Horn REA.

Thank you for your participation in the election of directors for YOUR cooperative – we need your vote!

### INSIDE

- Thinking About A New Service? .....** 2
- DON'T FORGET.....** 2
- For Sale By Sealed Bid ...** 3
- Watt's Cookin' .....** 4

### DID YOU KNOW

**May is National Electrical Safety Month.**  
see page 3

### CLOSED

**Big Horn REA offices will be closed May 31, 2021 in honor of Memorial Day.**



# Thinking About A New Service?

If you are planning a new service – new home, grain dryer, irrigation, etc. – you should call Big Horn REA early in the planning. We can help you with the process and ensure that you have the power you need. There are many factors to be considered when adding something that uses electricity. Does a larger transformer or service need to be installed? Is there clearance? When will you need the electricity? Is Big Horn's system capable of handling the prospective load?

Planning for a new service varies by the size of the project. "The larger the project, the more lead time we will need before we can

start building," says Bill Dahlke, Line Superintendent. "The larger projects normally involve ordering materials, which can take time. Also, our members need to be aware that new services often require right-of-way easements, whether it be from a neighbor or BLM or the Forest Service. These easements can be very time consuming."

Big Horn REA has a very large service territory. Our crews are very busy throughout the year, building new services, upgrading existing services, building and maintaining lines, repairing outages, etc. We need at least two weeks lead time in order to schedule



our work crews to build new services. We are not able to send crews to build the new service at a moment's notice, but we will do our best to get your project scheduled in the shortest time frame allowable. "Some projects need only a day or two of lead time, others need several months. We want to serve our members to the best of our abilities, but in order to do this, we will need a little help from you," shares Dahlke, "Big Horn is here to help. Help us help you."



## DON'T FORGET

There are now rebates available for electric yard and lawn equipment! Qualifying products include:

- electric mower or snow blower – rebate amount 25% of cost up to \$100
- electric trimmer, chainsaw, pruner and blower – rebate amount 25% of cost up to \$50

# FOR SALE BY SEALED BID

REMINDER - Big Horn Rural Electric Company is accepting bids several items. These items may be seen on Big Horn REA's website – [www.bighornrea.com](http://www.bighornrea.com). Items to be sold are As Is/Where Is.

All bids are subject to the terms and conditions of the Sale of Surplus Equipment. Bids must be received in the Basin office, PO Box 270, 415 South Street, Basin, WY 82410, in a sealed envelope clearly marked "SURPLUS EQUIPMENT SEALED BID". Bids must be received no later than 3:00pm on May 20, 2021. Big Horn REA reserves the right to accept or reject any bid.

## SPRING ENERGY-SAVING TIPS

<b>OPEN WINDOWS</b> at night to cool your home without switching on air conditioners.	<b>USE SUNLIGHT</b> to brighten your home during daylight hours instead of using artificial lights.	<b>GRILL OUTSIDE</b> on warmer spring days to keep the heat out of your home.
<b>CLEAN OUT YOUR REFRIGERATOR</b> by removing unneeded food to allow air to circulate. Clear dust from the coils behind your fridge to reduce energy consumption.	<b>CHANGE DIRECTION OF YOUR CEILING FAN</b> so it rotates counterclockwise and creates a cool breeze. If you feel airflow when standing directly under the fan, it's working.	
<b>TURN DOWN YOUR WATER HEATER</b> to the warm setting (120°F) and save money on your bill.	<b>GIVE YOUR AC A TUNEUP</b> by scheduling an inspection, cleaning coils and replacing filters.	<b>SEAL AIR LEAKS</b> using low-cost caulk or weather stripping to keep warm air from seeping in.

## FOR SALE BY SEALED BID

Big Horn Rural Electric Company is accepting bids on the following items. These items may be inspected at Big Horn REA's Basin shop on April 27th or May 18th from 10:00am to noon. Anyone interested in viewing an item should call the office at (307)568-2419 or (800)564-2419 to make an appointment. Anyone coming to view should be mindful of COVID-19 restrictions and be wearing a mask. **ITEMS MAY ONLY BE VIEWED BY APPOINTMENT.** Items to be sold are As Is/Where Is.

All bids are subject to the terms and conditions of the Sale of Surplus Equipment. Bids must be received in the Basin office, PO Box 270, 415 South Street, Basin, WY 82410, in a sealed envelope clearly marked "SURPLUS EQUIPMENT SEALED BID". Bids must be received no later than 3:00pm on May 20, 2021. Big Horn REA reserves the right to accept or reject any bid.

**#1** 1998 International 4800 4x4 with a 6 speed manual transmission a DT466E motor with 40,911 miles. Comes with a Texoma 270 pressure digger, and 6 different auger sizes.

**#2** 2011 Ford F350 4x4 regular cab with an automatic transmission, has a flatbed with boxes and a Warn bumper and winch. 165,928 miles.

**#3** New take off, 2020 Ford long box with front and rear bumpers.

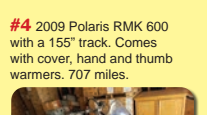
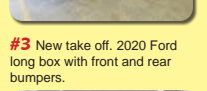
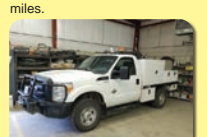
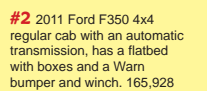
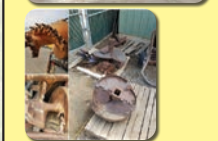
**#4** 2009 Polaris RMK 600 with a 155" track. Comes with cover, hand and thumb warmers. 707 miles.

**#5** 2001 Temco 16' bumper pull trailer with a 2 5/16 hitch and a breakaway system. 7000# g.v.w.

**#6** 1975 wire reel trailer.

**#7** New take off, 2020 Fab Four Black Steel front bumper with optional winch tray.

**#8** 2008 Yamaha Rhino 700 E.F.I. 1,320 miles



## Energy Efficiency Tip of the Month

Some manufacturers set water heater thermostats at 140 degrees, but most households usually only require them to be set at 120 degrees.

Consider lowering your water heater's temperature to save energy and slow mineral buildup in the heater and pipes.

Source: [www.energy.gov](http://www.energy.gov)



HAPPY MOTHER'S DAY



**A** new feature for 2021 to allow you to get to know our employees just a little bit better.

# Watt's Cookin'

— At Big Horn REA —

## SHEILA KAMPBELL



Sheila is our Member Services representative. She has worked for Big Horn REA for 17 years. Chances are if you've

called the office or come in, you've talked to Sheila.

### What do you bring to your co-op?

I've been here long enough I have a lot of knowledge about our system and members...and I'm kind of a jack of all trades here.

### What is the best thing about working at Big Horn?

There's never a dull moment! I love working with the members

and my co-workers. We have a pretty great group!

### What is your favorite meal from childhood?

My mom's vegetable beef soup with homemade dumplings. It's still my favorite!

## Recipe DIRECTIONS

### Sheila's Enchiladas

#### Ingredients:

2 lb hamburger	1 can diced green chilies
1 jar Pace picante sauce	1 cup sour cream
1 pkg taco size flour tortillas	1 pkg shredded cheese (I use Colby jack)
1 can cream of chicken soup	

#### Directions

Heat oven to 350 degrees. Brown hamburger. Add picante sauce and let simmer until some of the liquid evaporates.

Place scoop of hamburger mixture in tortilla and top with cheese. Roll and place in 9x13 pan. Continue with remaining tortillas/meat mixture until pan is full.

Mix one can cream of chicken soup, sour cream and 1 can green chilies. Pour over rolled tortillas. Top with more shredded cheese. Cook for 30-40 minutes until warm in center.

Serve with additional toppings if you choose – lettuce, sour cream, tomatoes, olives, salsa, etc.

## HIGHLIGHTS

is an official publication of  
BIG HORN RURAL  
ELECTRIC COMPANY

Box 270 VOLUME 42 NO. 3  
Basin, WY 82410 (307) 568-2419  
FAX 307-568-2402 1-800-564-2419  
bhrec@bighornrea.com  
www.bighornrea.com

**MANAGER: Jeff Umphlett**  
(307) 899-8153  
jeff@bighornrea.com

### Staff and Crew

Dotti Brown	Sheila Kampbell
Rusty Burden	Heather Lawrence
Bill Dahlke	Anthony Nelson
Clint Getzfreid	Bill Phillips
Todd Herman	Tristen Snyder
Reece Hill	Greg Tharp
Carrie Hunt	

#### For Outages or Trouble

Call the office number: **ANYTIME**  
(307) 568-2419 or 1-800-564-2419

After 5 p.m., weekends and holidays all calls will be answered by our professional answering service, who will contact the appropriate person(s).

Big Horn Rural Electric Company is an equal opportunity provider and employer.

### Board of Directors

John Joyce	President
Manderson • 568-2514	jjoyce56@gmail.com
Willie Bridges	Vice President
Cowley • 548-2545	willieb@pryormteng.com
Steve Helburn	Secretary
Greybull • 765-2900	stevhelburn@gmail.com
Sara Schlattmann	Treasurer
Otto • 921-2024	hortonwyo@gmail.com
John Fernandez	Ass't Secretary
Meeteetse • 272-1553	john@bighornrea.com