

HIGHLIGHTS

VOL. 42, ISSUE 5

Look for us online @ www.bighornrea.com

JUNE 2021




Coming Soon!

TO A MAILBOX NEAR YOU...

Big Horn REA will be sending out member surveys next month. We would love to hear from you. As a part of our Strategic Plan, we would like to find out what we are doing well, what we could do better, what else you would like to see us offer if anything and how we are doing in general. The survey

will be mailed to each member but will also be available on our website.

Each member who returns their survey will be entered in a drawing for a chance to win an energy credit or one of a number of other prizes! Please be sure to complete the survey. We work for you!



MEMBER BEWARE

Many scams are going on including deceptive sales tactics for the sale of solar panels. Be very careful about accepting sales pitches, especially those that are pushy or sound too good to be true. These may be something like: "this will eliminate your electric bill", "the utility will write you a check", "this will power your home during an outage", or "this will cost you nothing up front".

BEFORE you sign a contract to install solar generation, **PLEASE** call us. Your best interests are our concern, and many installers are only concerned with making a sale and profit - not about you.

In addition, there is a process members must follow in order to interconnect with Big Horn's power lines - an Application for Operation of Customer-Owned Generation, submittal of the Interconnection Agreement, a \$1,000 application fee and pay costs of installation of net metering and all related equipment.

INSIDE

We Are Ready For Storm Season. Are You? 2

LOOK UP 2

District Meetings 3

Watt's Cookin' 4

Ballots are due to James Reilly, CPA, P.C., PO Box 2528, Cody, WY 82414-2528 no later than 1:00 pm on June 18, 2021.



We're Ready for Storm Season.

Are You?



Summer months make conditions right for dangerous storms. These potential weather events can cause destruction to our electrical system, but crews are ready and standing by to respond should power outages occur.

damage from a power surge, and will also help prevent overloading the circuits during power restoration.

When major storms knock out power, our line crews take all necessary precautions before they get to work on any downed lines. We also encourage you to practice safety and preparedness to protect your family during major storms and outages.

That said, do leave one light on so you will know when power is restored. If you plan to use a small generator, make sure it's rated to handle the amount of power you will need, and always review the manufacturer's instructions to operate it safely.

In the event of a prolonged power outage, turn off major appliances, TVs, computers and other sensitive electronics. This will help avert

After the storm, avoid downed power lines and walking through flooded areas where power lines could be submerged. Allow ample

room for utility crews to safely perform their jobs, including on your property.

Advance planning for severe storms or other emergencies can reduce stress and anxiety caused by the weather event and can lessen the impact of the storm's effects.

From our co-op family to yours, we hope you have a safe and wonderful summer.

DISTRICT MEETINGS 2021

To all those who attended our District Meetings last month... THANK YOU!

We enjoyed seeing all your smiling faces, sharing some info with you and having the chance to visit and answer your questions.

The lucky winners from each meeting: (Pictured – Heber Jensen, winner of the electric lawn mower)

Shell Community Hall

Electric Credits – Kevin Keller (donated to member in need) & Nick Fleek
Meat Bundles – Dwight Koehn & Jody Gilbert
Swag Bags – Sharron Meisenholder & Bill Hayes
Electric Lawn Mower drawing – Duane Arquette

Ten Sleep School

Electric Credits – Jean Ross & Deanna Walters
Meat Bundles – Pamela Taylor & Neysha Lyman
Swag bags – Bill Murphy & Don Morrison
Electric Lawn Mower drawing – John Murphy

Lovell Community Center

Electric Credits – Tim Beck & Glen Howe
Meat Bundles – Todd Nunn & Nancy Nazer
Swag bags – Wilford Tippetts & Jason Zeller (donated

back candy & gift card – Paul North)
Electric Lawn Mower drawing – Chad North

Burlington Fire Hall

Electric Credits – Eric McNiven & Justin Umphlett
Meat Bundles – Frana Stanworth & Patty Davidson
Swag bags – Heber Jensen & Darrell Horton
Electric Lawn Mower drawing – Heber Jensen – OVERALL WINNER

Meeteetse School

Electric Credits – Dorothea Ewart & Eric Scott
Meat Bundles – Mary Jane Luther & Jean Collier
Swag bags – Charlene Brickle & Catherine Davey
Electric Lawn Mower drawing – Monty Thornton



Energy Efficiency Tip of the Month

A dirty filter causes your air conditioner to work harder than necessary. Remember to change your air filter every month (or every two months) to prevent dust buildup, which can lead to even bigger problems.

Source: www.energy.gov

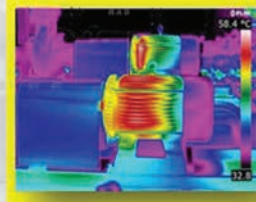
LOOK UP
LOOK OUT
LIVE



- Attention Irrigators -

DID YOU KNOW that Big Horn Rural Electric offers infrared camera analysis and review of your irrigation equipment? What can this do for you? It can find items such as hot spots, loose wires, loose connections, overloading, motors or pump shafts overheating and tell you if your soft start is working properly. Basically—you can find out you have a problem BEFORE you have a problem! As a value-added service, Big Horn provides this free of charge. If you're interested in this service, call our office at (800)564-2419 or (307)568-2419.

INFRARED TESTING



Also, Big Horn would like to encourage you to insure the investment in your pump by installing a motor saver device. Motor saver products monitor the power supply and protect electric motors by disconnecting the motor before damage occurs to items such as: the windings of the compressor, pump, and other motors that can be damaged by a fault.

IF YOUR HORSEPOWER HAS CHANGED, CALL OUR OFFICE

Protect Your Investment

MOTOR SAVERS

For around \$100.00 you can prevent damage to your pump

- Protects 3-phase motors from:
 - Contact failure
 - Loss of any phase (single phasing) on the load or line side
 - Low voltage
 - High voltage
 - Voltage unbalance



A new feature for 2021 to allow you to get to know our employees just a little bit better.

Watt's Cookin'

— At Big Horn REA —



Carrie's Frozen Chocolate Cheesecake

Ingredients:

CRUST

2 cup chocolate wafers, crushed
¼ cup butter, melted
¼ cup sugar

FILLING

4 cup whipped cream (refrigerated, not frozen), divided
24 oz cream cheese, softened
¾ cup chocolate syrup
3 cup Eagle Brand sweetened condensed milk

Directions

CRUST

Mix together and spread on bottom of pan.

FILLING

Whip together cream cheese, chocolate syrup, sweetened condensed milk and half of whipped cream. Spread over crust.

Top with remaining whipped cream and freeze.

CARRIE HUNT



Carrie is our accountant. She has worked for Big Horn REA for 16 years.

What do you bring to your co-op?

I have an education in accounting and have worked really hard to learn all things, not only accounting/financial related, but industry related to cooperatives.

What is the best thing about working at Big Horn?

The employees and the small office! Because we are a small company you get to learn about more than just your job, so it's always something new and different.

What is your favorite meal from childhood?

My mom's chicken & noodles over mashed potatoes! 😊

HIGHLIGHTS

is an official publication of
BIG HORN RURAL
ELECTRIC COMPANY

Box 270 VOLUME 42 NO. 5
Basin, WY 82410 (307) 568-2419
FAX 307-568-2402 1-800-564-2419
bhrec@bighornrea.com
www.bighornrea.com

MANAGER: Jeff Umphlett
(307) 899-8153
jeff@bighornrea.com

Staff and Crew

Dotti Brown	Sheila Kampbell
Rusty Burden	Heather Lawrence
Bill Dahlke	Anthony Nelson
Clint Getzfreid	Bill Phillips
Todd Herman	Tristen Snyder
Reece Hill	Greg Tharp
Carrie Hunt	

For Outages or Trouble

Call the office number: **ANYTIME**
(307) 568-2419 or 1-800-564-2419

After 5 p.m., weekends and holidays all calls will be answered by our professional answering service, who will contact the appropriate person(s).

Big Horn Rural Electric Company is an equal opportunity provider and employer.

Board of Directors

John Joyce	President
Manderson	• 568-2514	
jjoyce56@gmail.com		
Willie Bridges	Vice President
Cowley	• 548-2545	
willieb@pryormtng.com		
Steve Helburn	Secretary
Greybull	• 765-2900	
stevhelburn@gmail.com		
Sara Schlattmann	Treasurer
Otto	• 921-2024	
hortonwyo@gmail.com		
John Fernandez	Ass't Secretary
Meeteetse	• 272-1553	
john@bighornrea.com		